

# Bushfire Mitigation

Group 2

Kyle Shanahan

Hongsen Wang

Xinzhou Xia

# Topics to Cover

- Problem Statement
- Process Flow Chart
- Cost of Poor Quality (COPQ)
- Affinity Diagram
- Fishbone Chart

# Problem Statement

Bushfire is a kind of disaster which leads to severe ecological environment problems. Furthermore, it will cause property damage and loss of human life.

What is in our scope?

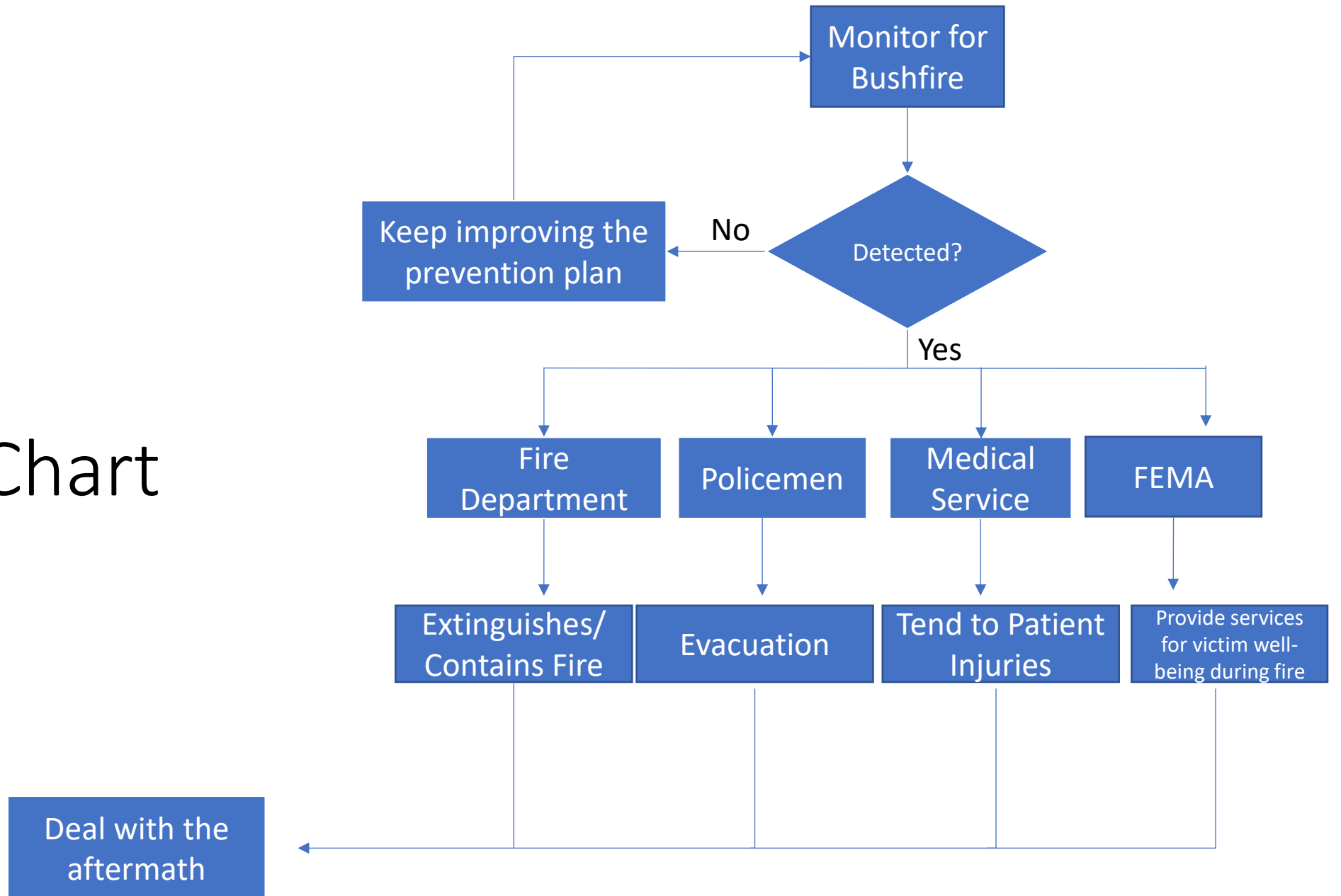
Reason

Prevention

Solution



# Flow Chart



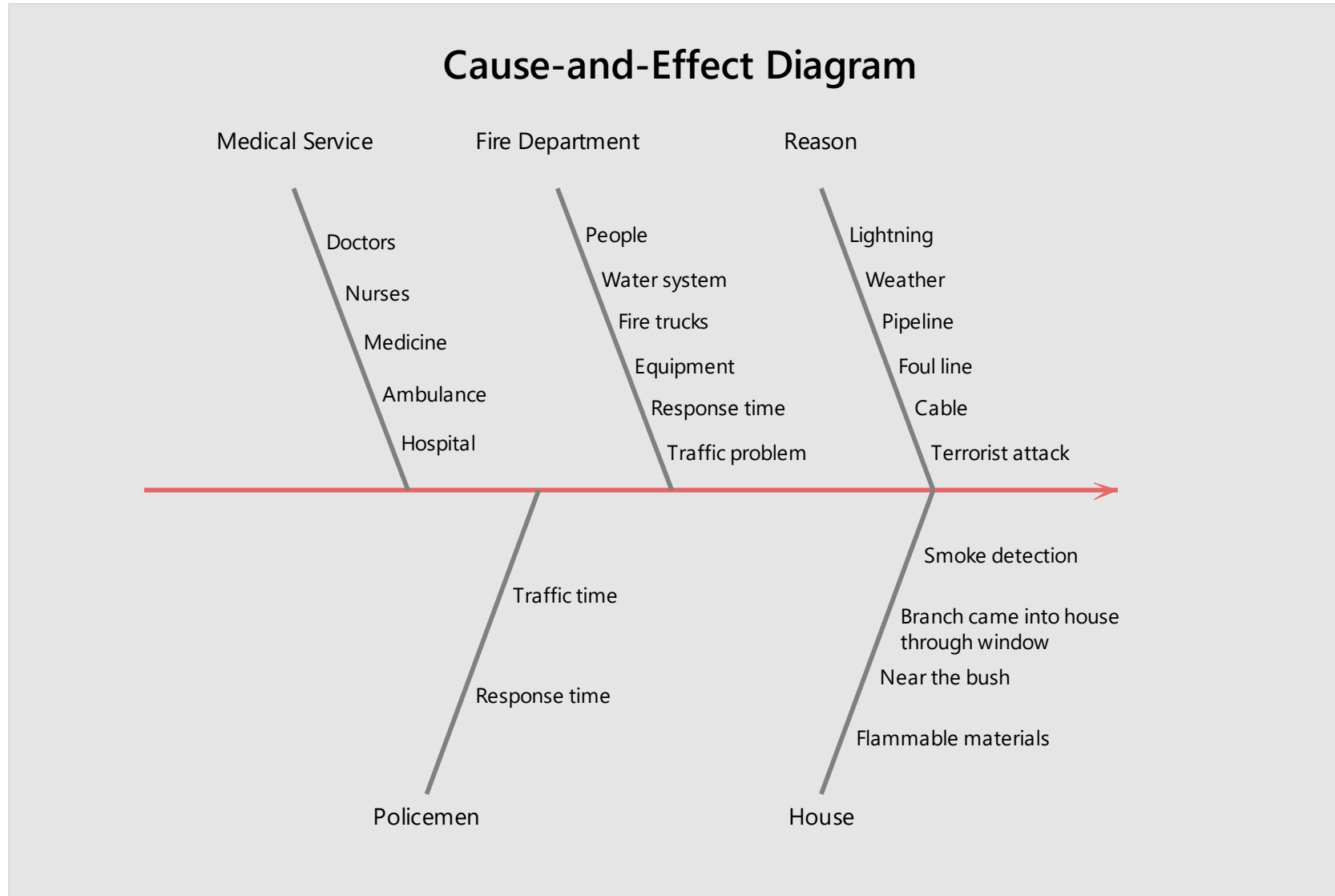
# Cost of Poor Quality (COPQ)

Process	Internal Failure	External Failure	Appraisal	Prevention
Before the bushfire	House near the forest Trees near the pipeline Trees near the foul line Trees near cable Flammable house material	Warm weather Human behavior Lightning Terrorist attack		Ask people move to different location Check the pipeline, cable, foul line Plan before the extreme weather Use non-flammable housing material Take precautions during high winds (embers)
Fire Department	Short of people water system fire trucks Equipment	Traffic slows response time		Hiring more people Optimize water system More advance fire trucks, even helicopters High-tech equipment Emergency vehicle routes
Policemen	Short of people	Traffic slows response time		Hiring more qualified people Emergency vehicle routes
Medical Service	Doctors Nurses Medicine Ambulances Hospital			Inventory of enough medicine More qualified doctors and nurses Enough ambulances Enough space to take care of patients

# Affinity Diagram

Reason	House	Fire Department	Policemen	Medical Service
Lightning	Flammable materials	People	People	Doctors
Weather	Near the bush	Water System	Response time	Nurses
Pipeline	Branch came into house through window	Fire Trucks	Traffic Problem	Medicine
Foul line	Smoke detection	Equipment		Ambulance
Cable		Response time		Hospital
Terrorist attack		Traffic Problem		

# Fishbone Chart



Questions?